



**DLM**

VALVES | INSTRUMENTATION | FLOW

# PRODUCT OVERVIEW



a member of the  
**BAOBAB INDUSTRIAL GROUP**







# CONTENT PAGE

Page

<b>About DLM</b>	3
<b>Projects and Africa</b>	4
<b>Our Main Industries</b>	5
<b>Valves:</b>	
Amal, Bailey	8
Birkett	9
Marvac, Marston, Baoyi	10
Buracco, Corflex Engineering	11
DLM Bronze Range, DLM Cast and Stainless Steel Range	12
DLM Cast and Ductile Iron Range, DLM Pneumatic Linear Actuators	13
Habonim Pneumatic Actuators, Habonim	14
Ham-let, Hattersley, Henry Pratt	15
Hisaka, Honeywell Braukman, Horne	16
Mascot, Mogas, Okumura	17
Pennant, Philmac, Peter Smith	18
RegO	19
Rienzi, Rotex Positioners, Sammi Machinery	20
Swiss Fluid, V-Tork	21
<b>Flow:</b>	
Isoil Impianti, Metermatic	24
Civacon, OPW	25
OPW	26
RegO	27
Midland, Civacon- Dry Bulk	28
Elsont, WLI, Larco	29
Carbovac, Wiese Europe, Technical Support	30
<b>Instrumentation:</b>	
Apator, Aplsens	33
Badger	34
Cerlic, Delta-Mobrey	35
Delta-Mobrey	36
DLM Pressure, DLM Drives, Elleta	37
Fox Thermal, Precision Mass	38
Mass, Vaisala	39
Conversion Chart, Flange Drillings	40
<b>BBBEE</b>	41

# DUPLEIX LIQUID METERS FLOW CONTROL (PTY) LTD

**With over 60 years' of experience, Dupleix Liquid Meters Flow Control (DLM) offers expert advice on a comprehensive range of products. It is renowned for providing the right solutions for overpressure protection; flow, level and density measurement; automation and control requirements.**

DLM maintains a substantial stock holding and has a branch infrastructure capable of providing skilled technical and sales service. DLM's products are either locally manufactured or distributed in terms of license agreements with overseas suppliers. We have in-house technicians to service products, an engineering team that is capable of delivering small projects as well as a workshop and test facility. The company is ready to offer its customers the knowledge and support they require. DLM has three divisions, namely Valves, Flow and Instrumentation.

## VALVES



DLM's extensive range covers all operating types and is available in a wide variety of materials to suit different media, pressure and temperature requirements. It is one of Southern Africa's leading suppliers of valves, pneumatic actuators and accessories as well as instrument valves and fittings for severe service applications in the mining industry.

## FLOW



DLM's Flow division focuses on the Southern African petrochemical market for accurate measurement and control of fuel. It delivers a technologically superior range of products and solutions that are sourced both locally and internationally to meet the demanding liquid custody transfer applications for fuel distribution, rail and road transport. Terminal Automation and Reconciliation Software is also offered.

## INSTRUMENTATION



DLM's Instrumentation division focuses on industrial and process field instrumentation for flow, level, temperature and pressure measurement as well as specialized instruments for moisture analysis and control. Refractometers for concentration measurement and interface detection and a full range of boiler control equipment.

# PROJECTS

## The Project Department within DLM

DLM's Projects Branch has a distinguished record of successfully completing a number of projects of various scales; small, medium, and large over recent years, with a predominant focus on the mining sector. Our extensive installed base across mines in South Africa and neighboring countries underscores our strong industry presence. We are dedicated to providing high quality products and exceptional professional service, which has solidified our reputation as a reliable partner in mining.

In addition to our achievements in the mining sector, DLM has also made significant strides in the petrochemical industry in South Africa. This expansion highlights our versatility and capability to deliver tailored solutions across different industrial sectors, further reinforcing our commitment to excellence and customer satisfaction.

## AFRICA

### DLM's Footprint in Africa is Robust and Expanding

DLM's Africa branch is proactively engaging with the continent's dynamic industrial landscape by traveling extensively across the region. The team is participating in key exhibitions and conducting site visits to better understand and address the needs of our customers. This hands-on approach allows DLM to tailor our services for medium to large-scale projects, focusing on the supply of high-quality valves, flow control, and instrumentation products. By immersing ourselves in the local market and forging direct connections, DLM is committed to delivering precise solutions and exceptional support to meet the evolving demands of the African market.

# OUR MAIN INDUSTRIES



**Factories**



**Marine**



**Oil and Gas**



**Paper and Pulp**



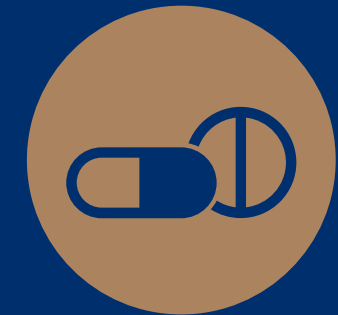
**Sugar and  
Sugar Refinery**



**Water and  
Waste Water**



**Food And Beverage  
Plants**



**Pharmaceutical**



**Power Generation**



**Clean Energy**

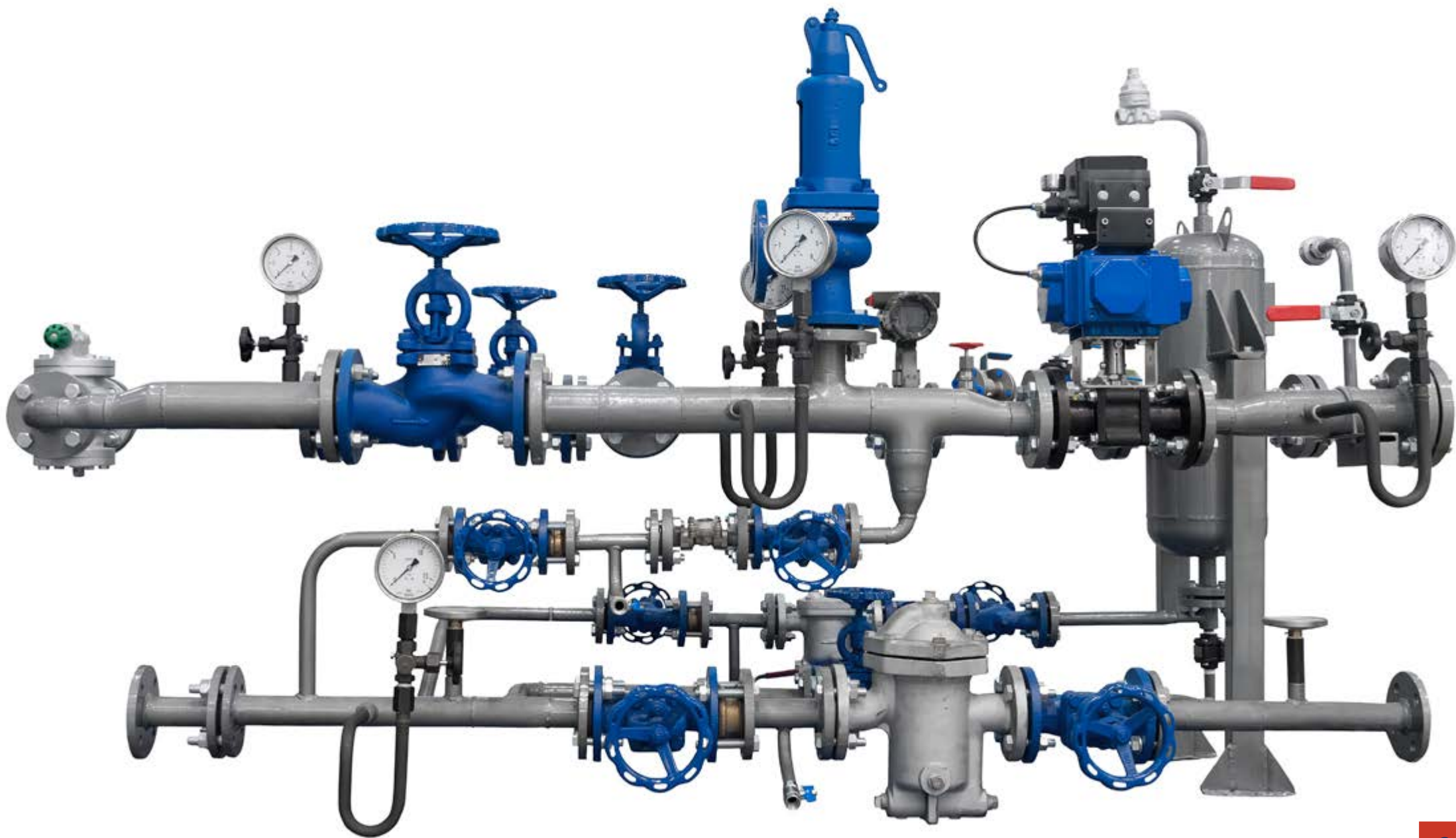


**Mining**



**Petrochemical**

# VALVES







The Peter Smith Valve Company Ltd





# Amal

## FLAME ARRESTERS

Amal specialise in the design, specification and manufacturing of Flame Arresters. These metal flame arresters are safety devices designed to stop the propagation and spread of flames through flammable gases or vapour mixtures in pipelines.



In-Line Deflagration



In-Line Detonation



End-of-Line  
Deflagration

## G4 PILOT PRESSURE REDUCING VALVES

Pilot operated valves provide very close accuracy of pressure control, and due to their high flow rates, pilot valves will often be smaller than the comparable direct acting valve.



2046



2045



2044



2043



2042



Low Pressure Top

## DA SERIES PRESSURE REDUCING VALVES

In a direct acting pressure reducing valve, the controlled pressure acts directly through a diaphragm or piston on an imposing force from a compressed helical spring. The construction is simple and robust.



Class T



C10



EMERSON™

# Bailey

## SAFETY & REGULATING VALVES

## 700 SERIES SAFETY RELIEF VALVES

Safety relief valves should be used on any closed vessel or system in which pressure, other than atmospheric or the design pressure, of the system can be exceeded.



707



716



716H



716T



746



756



766



776



480



485



490



616D

## 480/485/490 RELIEF AND 616D SAFETY VALVES

# Birkett

## SAFETY RELIEF VALVES

For more than 100 years Birkett safety relief valves have been installed to protect process plant and equipment from the potentially disastrous effects of exceeding a design pressure.

Birkett offers a range of safety valves to suit most application requirements.



WB Series



Safeflo



Safeset



**EMERSON**<sup>™</sup>



# Marvac

## TANK PROTECTION VALVES

Marvac manufacture an extensive range of products to protect low pressure storage tanks and vessels. These products help to prevent damage to the tank and also prevent the tank vapours from escaping, ensuring the safety of personnel and the surrounding environment.



Pressure/Vacuum Relief Valves



Pilot Operated Relief Valves



Tank Blanketing Valves



Emergency Vent Manway and Gauge Hatch



# Marston

## BURSTING DISCS

A complete range of non-reclosing pressure relief devices, from simple conventional designs through composite assemblies to top-of-the-range reverse buckling discs.



Forward Acting



Reverse Buckling



Flat



## BAOYI VALVES

### GATE, GLOBE AND CHECK VALVES

Baoyi manufactures a full range of high quality API gate, globe, ball and check valves.



Gate Valves



Globe Valves



Swing Check Valves



Double Door Check Valves



Fire Safe Ball Valves



DIN Spec Globe Valves



## FIRE SAFE VALVES

Buracco are a renowned valve manufacturer that produce a range of fire safe tank storage check valves as well as double and triple offset butterfly valves



8000 Series



7000 Series



6000 Series



5000 Series

## CHECK VALVES



Dauphin Series



Separfeu Series



CLA Series



CAR Series



## PINCH VALVES

These valves are designed for abrasive and corrosive slurry applications for high and low pressures. All Corflex pinch valves are flanged.



Pinch Valves



Nippit Pinch Valves

## CAST AND STAINLESS STEEL RANGE

DLM's Cast and Stainless Steel Range of valves are used on general purpose applications across most market segments.



Y-Strainers



3-Way Ball Valves



Disc Check Valves



Screwed 3 Way Ball Valves



3 Piece Screwed Ball Valves



1 Piece Screwed Ball Valves



2 Piece Screwed Ball Valves



2 Piece Flange Ball Valves

DLM's Bronze range is used widely in the steam and condensate industry for isolation, filtering and back flow prevention.



Globe Valves



Gate Valves



Check Valves



Y-Strainers





## CAST AND DUCTILE IRON RANGE

DLM 's Cast and Ductile Iron Range are commodity purpose valves for low pressure non-aggressive applications used for water and air generally.



Butterfly Valves



Double Door Check Valves



Y-Strainers



Globe Valves



Check Valves



Gate Valves



## PNEUMATIC LINEAR ACTUATOR

The DLM Linear Actuator range is an essential automation tool for plants using knife gate valves. Operating multiple valves from a central location has never been easier. No Matter the size of the valve, location of the valve or working conditions, the DLM Linear Actuator is the right choice for process automation and control.



Pneumatic Linear Actuator



## COMPACT PNEUMATIC ACTUATOR AND ACCESSORIES

The Compact four piston quarter turn Pneumatic Actuator has been developed to be simple, reliable and efficient, using a patented rack and pinion design. Torque range 6NM-4000NM. Open and closed stroke adjustments. Available in sizes C15-C90.



Breather Blocks



ImpAct™ Spring Assists



Pneumatic Actuators

## BALL VALVES

Habonim are committed to the engineering, manufacturing and supplying of superior products for the most demanding industries including oil and gas, chemical, petrochemical, pharmaceutical and mining. They provide high end valves for the natural gas value chain including hydrogen.



Control Valves



Flanged Valves



Cryogenic Valves



Standard Valves



Metal Seated Valves



High Pressure Valves



Diverter Valves



Trunnion Valves



Multi-port Valves



## FITTINGS, MANIFOLDS, PROCESS VALVES AND QUICK CONNECTORS

HAM-LET group specializes in the design, development, production, and marketing of high quality instrumentation valves and fittings in a wide variety of materials for high pressure, temperature and vacuum applications. They are used in a wide range of industries including petrochemical, semiconductor, energy, food, biotechnology, pharmaceutical, pulp and paper and mining.



Fittings



Manifolds



Process Valves



Quick Connectors



## PLUG, GATE, GLOBE AND CHECK VALVES

In compliance with the British standards and WRc approval, this well known range of valves is manufactured to the highest standard of quality in bronze.



Gate Valves



Globe Valves



Check Valves



Ball Valves



Balancing Valves



Y-Strainers



## BALLCENTRIC VALVES

HENRY PRATT Ballcentric® plug valves are suitable for a wide range of applications including liquids, slurries and powders. They are particularly effective in abrasive media applications.



Plug Valves

## BALL VALVES

Hisaka Works Limited (Japan) is a manufacturer of high quality, soft seated and metal seated ball valves for a variety of applications. DLM currently manufactures the 2-piece full bore ball valve in South Africa under license agreement. Ball valves available in 2, 3 or 4 Way.



Soft Seated Ball Valves



Metal Seated Ball Valves



D06F



D06FI



F76



D15S



D22



SM152

**Honeywell**

**Braukmann**

## PRESSURE REDUCING VALVES

Honeywell supplies a full range of pressure reducing and safety valves for the process industry. Their products require an extremely low level of maintenance and are service friendly.

# HORNE

## THERMOSTATIC CONTROL VALVES

The Horne range of thermostatic control valves for steam, hot water and cold water systems are manufactured in bronze and provide reliable temperature control for commercial and domestic applications.



Steam and Water  
Mixing Valves



Steam Injection Heaters



Temperature Control  
Valves



## CONTROL VALVES

MASCOT is a well-established manufacturer and supplier of Control Valves, Shut-off Valves, Desuperheaters and Pressure Reducing Desuperheating Stations (PRDS).



GFlo- Globe Control Valves



DiskFlo- Butterfly Valves



VFlo- Segmented Ball Valves



EFlo- Eccentric Plug Valves



QuickFlo- Full Bore Ball Valves



FlushFlo- Flush Bottom Valves



DeFlo- Variable Sprays



## SEVERE SERVICE BALL AND CONTROL VALVES

The leading provider of severe-service, metal-seated ball valves and flexstream control valves for petrochemical and refining, power generation, mining and minerals as well as autoclaves.



C-Series



T-Series



Isolator 2.0



iRSVP



G-Series



## BUTTERFLY VALVES

Okumura's unique general purpose soft seated butterfly valves offer long service life due to both low friction and torque. Okumura high performance valves are suitable for specialised services up to 450° C.



5400 Series



616J / 618H / 622H Series



606 Series



612X and 615X Series



## STEAM TRAPS

The Pennant product range includes steam traps, air vents, compressed air drain traps, sight checks and strainers. They are manufactured in a variety of materials, sizes and end connections and to International Standards. There is a solution to almost every industrial application.



Ball Float Traps



Thermodynamic Steam Traps



Thermostatic Steam Traps



Inverted Bucket Traps



Air Vents



Piston Valves

## Philmac

### FIXED RATIO PRESSURE REDUCING VALVES

With over 40 years of proven usage, Philmac ratio pressure reducing valves accurately control service line pressure in fixed head water systems. Pressure is reduced by ratio to protect appliances from damage caused by excess pressure. The valves also protect pipework by reducing surge and water hammer.

The Peter Smith  
Valve Company Ltd



## BUILDING AUTOMATION PRODUCTS

Specialising in the manufacturing of small to medium size valves for the control of fluids and gases in most pipe conveying systems, the Peter Smith Valve Company offers quality products in cast iron, cast steel and gunmetal for varying applications. Valves are supplied with metric, ANSI or imperial flange drilling's.



Flanged Ratio Valves



Screwed Ratio Valves



Globe 181



Parallel Slide 650



Angle Boiler Crown 281



Lift Check 184



Ball Float 501



## LPG STATIC EQUIPMENT

RegO offers efficient bulk storage solutions tailored for the LPG and NH3 industries, ensuring safety, reliability, and cost-effectiveness in storing and managing these essential energy resources.



MultiPort® Pressure Relief Valve



Delta Port™ Relief Valve Manifolds



Pressure Relief Valves



Filler Valves



Pressure Relief Valves



Regulators



Emergency Shut-Off Valves

## LPG CYLINDER SOLUTIONS



Service Valve



Pressure Relief Valve



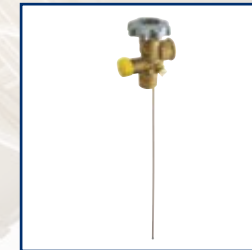
Multivalve Vapour Withdrawal



Multivalve Liquid Withdrawal



Cylinder Valve Liquid Withdrawal



Cylinder Valve Vapour Withdrawal



Double Check Filler Valve With Cap

## CRYOGENIC LIQUID AND VAPOUR PRODUCTS



Cryogenic Globe Valves



Relief Device Diverters



Combination Pressure Builder/Economizer



In-line Check Valves

**KNIFE GATE, CHECK AND FOOT VALVES**

Designed and manufactured by DLM, Rienzi valves are robust, durable and suitable for a variety of water and slurry applications.



Knife Gate Valves



Wafer Style Non-Return Valves



Diaphragm Non-Return Valves



Foot Valves



Wafer Slim Non-Return Valves



**SMART POSITIONER**

Rotex is a leading manufacturer and exporter of smart positioners that are simple to convert from direct acting to reverse acting or vice versa. They are designed to meet your most basic to advanced needs, with an adaptive PID loop which helps ensure high accuracy, lower dead band and extremely steady performance of the positioner.



Smart Positioners



**SLIDE TYPE BLIND VALVES**

Sammi Machinery Co.,Ltd. a Line Blind Valve fabricator and machine shop, is wholly owned subsidiary of line blinding technology and products. The SAMMI LINE BLIND incorporates a tough and simple design that has been developed to provide absolute shutoff, long life and trouble-free service with minimum maintenance.



Sliding



Swing



Compact



Non-Spill



Jack Bolt



## PTFE AND PFA LINED VALVES

Swiss Fluid has evolved into a diversified engineering and manufacturing company, designing, manufacturing and supplying high quality products tailored to meet all applications. Swiss Fluid serves the chemical and pharmaceutical industries worldwide.



Ball Valves



Butterfly Valves



Diaphragm Valves



Ball Check Valves



Swing Check Valves



Cylindrical Plug Valves



Sight Glasses



In line Sampling Valves



## KNIFE GATE VALVES

V-TORK Controls, a professionally managed ISO 9001:2008 compliance certified company, is involved in the design and manufacturing of both Uni and Bi Directional Knife Gate Valves mainly used in slurries, pulp stock and corrosive fluids.



U160



B270



B540



B720



# FLOW







**ELSONT**

**OPW**   
A **DOVER** COMPANY



**WIESE EUROPE**  
CUSTOM MADE LOADING & TRANSFER SYSTEMS



**CIVACON**   
PART OF OPW A **DOVER** COMPANY

**MIDLAND**   
PART OF OPW a **DOVER** company

**REGO**   
PART OF OPW | a **DOVER** company

SETMAT **LARCO** 

**ISOIL**   
I M P I A N T I



**Metermatic**

 **CARBOVAC**  
Vapour Recovery Solutions

**FLOW METERING AND CONTROL EQUIPMENT**

Soil Impianti designs and manufactures flow metering and control instrumentation used in the petrochemical industry for both bulk delivery vehicles and bulk storage facilities.



P.D Meters



Air Separators



ISO Valve



Grounding Unit



Additivation



Truck Meter



**Metermatic**

**ELECTRONIC EQUIPMENT AND SOFTWARE FOR TRUCK AND GANTRY**

Metermatic, a wholly owned subsidiary of DLM, manufactures intrinsically safe electronic equipment, systems and software packages that are predominantly used in the Petrochemical Industry for both truck and terminal fuel loading applications.



EM6  
Preset Controller



SCS 400  
Vehicle Monitoring



LMS-100  
HFO Overfill



HFO-100  
HFO Overfill



SAM Accounting



SAM Automation



## TRUCK

OPW Civacon is dedicated to providing expert solutions for the safe handling and monitoring of hazardous bulk products on tank trucks.



Manhole Cover



Vapor Vents



Overfill Sensors



Bottom Loading Adaptor



Bottom Valve



ROM- Retain and Overfill Monitor



Manifolds



Dust Caps

## ENGINEERED SYSTEMS

OPW Engineered Systems offers a complete range of equipment available to meet today's bulk loading and unloading requirements whether your application involves tank trucks, rail cars, ISO containers or safe earth and overfill monitoring.



Top Loading Arms



Bottom Loading Arms



Custom Loading Arms



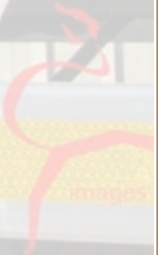
API Lynx Bottom Coupler



Plug and Cords



Rack Monitor



images

## QUICK AND DRY DISCONNECTS

OPW Engineered Systems specializes in engineering, designing and manufacturing of systems for the safe and efficient loading and unloading of critical hazardous fluid materials.



Autolok®- Self Locking Arms



Kamlok® Series



Kamvalok® Series



Drylok™



Epsilon®



Hiltap™

## PROCESS PRODUCTS

OPW offers products that monitor, sense and reveal the fluids in your operation. Whether you're monitoring petroleum products, liquefied gases, solvents, or hazardous, corrosive chemicals, OPW's collection of Process Products help keep your fluids under control.



Visi Flo®



ISO-Ring Gauge



ISO Spool

## SWIVEL JOINTS

OPW swivels, mainly used in flexible piping systems, loading arms, hose reels, sewer rodding and wastewater treatment equipment, as well as various types of process machinery.



Swivel Joints



Endura Split Flange



General Purpose



Hose Reel Swivels



## LPG RAIL TANK CAR VALVES

LPG products for tanker trucks have to be able to withstand harsh conditions, road vibration, and repeated use. They design, assemble, and test 100% of the products to ensure you get superior quality and service life for all the valves, nozzles, safety systems, and accessories your trucks require.



Globe & Angle Valves



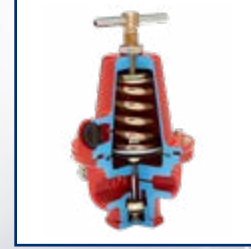
Globe Valve



2" & 3" Globe/Angle Valves



Tank Car Angle Valves



Regulator

## PRESSURE RELIEF VALVES FOR MOBILE TANKERS

Bleeder, excess flow, pressure relief and hydrostatic relief valves provide secure and reliable connections, preventing excessive flow and ensuring safe operation in LPG and NH3 systems.



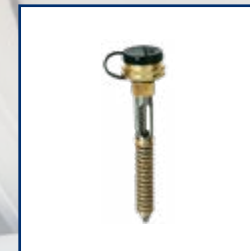
Bleeder Valve



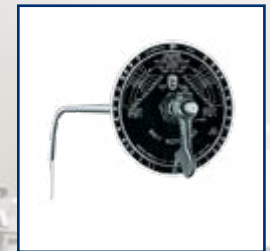
Hydrostatic Relief Valve



Excess Flow Valves



Pressure Relief Valve



Rotogage® Assemblies

## INTERNAL VALVES FOR ROAD TANKERS



Flanged Internal Valve



Threaded Internal Valve



Flomatic Internal Valve

## RAIL TANK EQUIPMENT

Midland manufacturing is committed to continually supply the most durable and reliable valves and level measurement devices for the railroad, marine barge and ISO container markets.



Gauging Devices



Bottom Outlet Valves



Safety Relief Valves



Vacuum Relief Valves



Needle Valves



Angle Valves



Miscellaneous Products

## DRY BULK PRODUCTS

Civacon specializes in components for pneumatic tank trailers, railcars, chemical and pharmaceutical plants, and any application that requires the processing, movement and storage of dry-bulk or liquid materials including butterfly valves, actuators, aeration systems, relief valves, hopper tees, couplers and manhole covers.



Butterfly Valves



Check Valves



Pipe Coupler



Pressure Relief Valve



Aerator Assemblies



Hopper Tees



Manhole Covers





# ELSONT

## STORAGE TANK EQUIPMENT

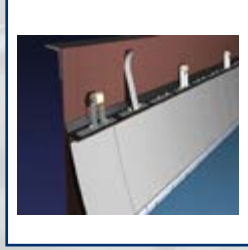
Elsont designs and manufactures top quality above-ground storage tank equipment for improved storage, emission reduction and product containment.



Aluminium Dome Roofs



Pontoon Internal Floating Roofs



Seals for Floating Roof Tanks



Gauge Pole Covers



Floating Suction Lines & Skimmers



Floating Roof Drain Systems



## STORAGE TANK EQUIPMENT

WLI focus on providing exceptional GRP Composite Floating Roofs, offering a reliable and future orientated solution to operate floating roof tanks considering all relevant management aspects.

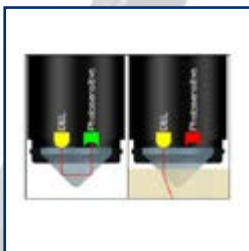


GRP Full Contact Internal Floating Roofs



## LIQUID STORAGE TANK EQUIPMENT

Larco manufacture hi level, hi hi level alarm equipment , for overfill protection in the form of oil on water detectors and uniquely designed (SIL Rated) PLC Controls.



Optic Sensors



Oil-on-Water Detector



Docil Overfill Protection Sensor





## VAPOUR RECOVERY SOLUTIONS

CARBOVAC is a worldwide supplier of hydrocarbon vapour recovery solutions for truck, rail, car and marine loading applications.



Vapour Recovery Unit



Vapour Recovery Unit  
Maintenance & Servicing



## LOADING AND TRANSFER SYSTEMS

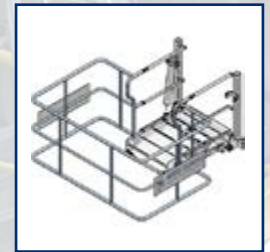
Wiese Europe are manufacturers of custom made loading and transfer systems. They provide loading solutions and related collective safety equipment for the transfer of liquids and gases between trucks/trains/ships and static installations.



Marine Loading Arms



Folding Stairs



Safety Cages



## METER ASSIZING, CALIBRATION AND SUPPORT

DLM hold South African National Accreditation System (SANAS) 10378:2012 accreditation and have in-house technicians who are qualified Verification Officers for the following services:

- Piston Prover Verification
- Test Measure Verification
- Mass Verification

## SUPPORT SERVICES

DLM's technical team offer support services for equipment supplied by our flow division specifically in the Gantry and Fuel Transport sectors





# INSTRUMENTATION









## IMPELLER WATER METERS

APATOR – Founded in 1925 in Poland, manufacturers of many metering instrument types including the MWN Range of Hot & Cold bulk woltman water meters.



Cold Water



Hot Water



## PRESSURE, LEVEL AND TEMPERATURE MEASUREMENT

APLISENS S.A. is one of the leading manufacturers of high quality process instrumentation. From the beginning it has concentrated on electronic pressure and differential pressure measurement technology. High quality, high flexibility and competent support to customers has always been their focus.



PC 28



APC 2000 ALW



APR 2000ALW

## LEVEL



PCE 28P



SGE 25



APR 2000

## TEMPERATURE



LI-24G



CT AL





**Badger Meter**

### ELECTROMAGNETIC FLOW METERS

Badger Meter is a market leader in flow measurement technology with more than a century of innovation. Badger Meter serves water utilities, municipalities, and commercial and industrial customers. Measuring water, chemicals and other fluids, Badger Meter products are known for accuracy and long-lasting durability.



M1000



M2000



M3000/M4000



M5000  
Battery Powered

### TURBINE FLOW METERS



Blancett Turbine Meter  
Model 1100



Cox LoFlo series  
Turbine Meter



Turbine Meter  
Vision 3000

### DYNASONICS ULTRASONIC FLOW METERS



DFX



IS6000



DXN Hybrid Portable



TFX-5000

### OVAL GEAR METER



Industrial Oval Gear



EX Precision Oval Gear





## MONITORING INSTRUMENTS

Cerlic instruments for on-line measurement and control are characterized by a high degree of quality, functionality and user-friendliness to provide information you can trust. They develop their products according to ISO9001 and ISO14001 standards.



CBX



ITX 20



CTX 2050



Multi Tracker- Portable central unit



## BOILER CONTROL LEVELS

Delta Mobrey Limited is a global specialist in the design and manufacture of temperature, pressure and flow process control instrumentation, with particular expertise in level and boiler control.



Sequencing Blowdown Valve



Boiler Level Controls



Inductive Modulator Control Box



Modulating Control Valve



Hydrostep Control Box

**CONTINUOUS LEVEL MEASUREMENT**



Universal Controller  
DMCU900



Ultrasonic Transmitter  
DMSP



Hydrostatic Level  
Transmitter 9000



Ultrasonic Transmitter  
DMSP422

**POINT LEVEL SWITCHES**



Vibrating Rod



Dry Products Paddle  
Switch



Magnetic Level Switch



Displacer Level  
Transmitter



Ultrasonic Gap Level  
Switches

**PRESSURE SWITCHES**



230 Pressure Switch



VM Pressure Switch



P03 Pressure Switch



202 Pressure Switch





## PRESSURE TRANSMITTERS

DLM's quality pressure transmitters are a high performance configurable solution to pressure measurement. The use of DLM's piezoresistive diffused silicon technology and analogue circuitry enables best in class performance for stability, low power and frequency response.



CS-PT 100



CS-PT 200



CS-PT 400-2



CS-PT 1100



## VARIABLE FREQUENCY DRIVES

DLM V-Drives control the latest generation of Permanent Magnet and Standard Induction Motors. DLM offers the AMC (Advanced Motor Control) and EPC (Efficient Pump Control) V-Drives which are available in IP20, IP55 & IP66 enclosures.



Advanced Motor Control (AMC)



Efficient Pump Control (EPC)



FLOW MONITORS

## FLOW MONITORS

Eletta has been producing flow monitors for the past 70 years and has a strong reputation for longevity, derived from robust design and precision and is well suited to rugged industrial environments.



Paddle Switch



Liquid Flow Switch



S-Series



M3-Series



D-Series



V-Series

GASES  
ESTIBLES





## THERMAL MASS FLOW INSTRUMENTS

Fox Thermal Instruments provides a broad range of reliable, accurate and full featured Gas Mass flow meters to Industrial Control OEM's and end user customers.



Model FT 1  
(The Plug 'n Play)



Model FT 2A  
(Communications Specialist)



Model FT 3  
(Ideal for Offshore)



Model FT 4A  
(Perfect for Digesters)



Model FT 4X  
(Advanced Oil & Gas)

## TEMPERATURE GAUGES



Gas/Mercury Filled  
Temperature Gauges



Bimetal Temperature  
Gauges



GFB Industrial PG



WPS Process PG



PG Utility Gauge



CPB Low Pressure  
Capsule Gauges



## PRESSURE GAUGES

Founded in 1967, Precision Industries (now Precision Mass Products Pvt. Ltd) is one of the most recognized manufacturer of a wide range of Pressure and Temperature measurement instruments in India.



## DIFFERENTIAL PRESSURE GAUGES



D201 Magnetic Piston  
Differential Pressure  
Gauges



Single Diaphragm  
D101

## DIAPHRAGM SEALS



DS50 Flanged  
Diaphragm Seal



DS20 Screwed  
Diaphragm Seal



DS52 Sanitary  
Diaphragm Seal

# VAISALA

AUTHORIZED PARTNER

LIQUID MEASUREMENTS

Vaisala design and supply specialized in-line liquid analyzers and process refractometers for Paper & Pulp evaporators, Sugar Vacuum Pan & Evaporator Processing, industrial process instrumentation and control. Previously known as K-Patents.



Seedmaster System



General Compact



General Probe



Pharma Process



Sanitary Compact



Safe Drive



Process Refractometer  
PR-23-RP

# CONVERSION CHART

1 mPa = 10 bar									
kPa	BAR	P.S.I	METER HEAD	FEET HEAD	kPa	BAR	P.S.I	METER HEAD	FEET HEAD
1	0,01	0,145	0,102	0,335	540	5,40	78,321	55,162	180,979
2	0,02	0,290	0,204	0,670	560	5,60	81,221	57,205	187,682
3	0,03	0,435	0,306	1,005	580	5,80	84,122	59,248	194,385
4	0,04	0,580	0,409	1,341	600	6,00	87,023	61,291	201,088
5	0,05	0,725	0,511	1,676	620	6,20	89,924	63,335	207,790
6	0,06	0,870	0,613	2,011	640	6,40	92,824	65,378	214,493
7	0,07	1,015	0,715	2,346	660	6,60	95,725	67,421	221,196
8	0,08	1,160	0,817	2,681	680	6,80	98,626	69,464	227,899
9	0,09	1,305	0,919	3,016	700	7,00	101,527	71,507	234,602
10	0,10	1,450	1,022	3,351	720	7,20	104,427	73,550	241,305
20	0,20	2,901	2,043	6,703	740	7,40	107,328	75,593	248,008
30	0,30	4,351	3,065	10,054	760	7,60	110,229	77,636	254,711
40	0,40	5,802	4,086	13,406	780	7,80	113,130	79,679	261,414
50	0,50	7,252	5,108	16,757	800	8,00	116,030	81,722	268,117
60	0,60	8,702	6,129	20,109	820	8,20	118,931	83,765	274,820
70	0,70	10,153	7,151	23,460	840	8,40	121,832	85,808	281,523
80	0,80	11,603	8,172	26,812	860	8,60	124,733	87,851	288,225
90	0,90	13,053	9,194	30,163	880	8,80	127,633	89,894	294,928
100	1,00	14,504	10,215	33,515	900	9,00	130,534	91,937	301,631
120	1,20	17,405	12,258	40,218	920	9,20	133,435	93,980	308,334
140	1,40	20,305	14,301	46,920	940	9,40	136,336	96,023	315,037
160	1,60	23,206	16,344	53,623	960	9,60	139,236	98,066	321,740
180	1,80	26,107	18,387	60,326	980	9,80	142,137	100,109	328,443
200	2,00	29,008	20,430	67,029	1000	10	145,038	102,152	335,146
220	2,20	31,908	22,474	73,732	1100	11	159,542	112,368	368,660
240	2,40	34,809	24,517	80,435	1200	12	174,046	122,583	402,175
260	2,60	37,710	26,560	87,138	1300	13	188,549	132,798	435,690
280	2,80	40,611	28,603	93,841	1400	14	203,053	143,013	469,204
300	3,00	43,511	30,646	100,544	1500	15	217,557	153,229	502,719
320	3,20	46,412	32,689	107,247	1600	16	232,061	163,444	536,233
340	3,40	49,313	34,732	113,950	1700	17	246,565	173,659	569,748
360	3,60	52,214	36,775	120,653	1800	18	261,068	183,874	603,263
380	3,80	55,114	38,818	127,355	1900	19	275,572	194,090	636,777
400	4,00	58,015	40,861	134,058	2000	20	290,076	204,305	670,292
420	4,20	60,916	42,904	140,761	2100	21	304,580	214,520	703,806
440	4,40	63,817	44,947	147,464	2200	22	319,084	224,735	737,321
460	4,60	66,717	46,990	154,167	2300	23	333,587	234,951	770,835
480	4,80	69,618	49,033	160,870	2400	24	348,091	245,166	804,350
500	5,00	72,519	51,076	167,573	2500	25	362,595	255,381	837,865
520	5,20	75,420	53,119	174,276	5000	50	725,190	510,762	1675,730

# FLANGE DRILLINGS

mm	BS10,--- T/D, T/E, T/F			ANSI--- 150, 300, 600#		
	NO OF HOLES	HOLE DIA.	P.C.D	NO OF HOLES	HOLE DIA.	P.C.D
15	4	14	67	4	16	60, 67, 67
20	4	14	73	4	16, 19, 19	70, 83, 83
25	4	14, 14, 17	83, 83, 87	4	16, 19, 19	79, 89, 89
32	4	14, 14, 17	87, 87, 98	4	16, 19, 19	89, 98, 98
40	4	14, 14, 17	98, 98, 105	4	16, 22, 22	98, 114, 114
50	4	17	114, 114, 127	4, 8, 8	19	121, 127, 127
65	4, 4, 8	17	127, 127, 146	4, 8, 8	19, 22, 22	140, 149, 149
80	4, 4, 8	17	146, 146, 165	4, 8, 8	19, 22, 22	152, 168, 168
100	4, 8, 8	17	178, 178, 191	8	19, 22, 25	191, 200, 216
125	8	17, 17, 22	210, 210, 235	8	22, 22, 29	216, 235, 267
150	8, 8, 12	17, 22, 22	235, 235, 260	8, 12, 12	22, 22, 29	241, 270, 292
200	8, 8, 12	17, 22, 22	292, 292, 324	8, 12, 12	22, 25, 32	298, 330, 349
250	8, 12, 12	22, 22, 25	356, 356, 381	12, 16, 16	25, 29, 35	362, 387, 432
300	12, 12, 16	22, 25, 25	406, 406, 438	12, 16, 20	25, 32, 35	432, 451, 489
350	12, 12, 16	25, 25, 29	470, 470, 495	12, 20, 20	29, 32, 38	476, 514, 527
400	12, 12, 20	25, 25, 29	521, 521, 552	16, 20, 20	29, 35, 41	540, 572, 603
450	12, 16, 20	25, 25, 32	584, 584, 610	16, 24, 20	32, 35, 44	578, 629, 654
500	16, 16, 24	25, 25, 32	641, 641, 673	20, 24, 24	32, 35, 44	635, 686, 724
600	16, 16, 24	29, 32, 35	756, 756, 781	20, 24, 24	35, 41, 51	749, 813, 838

mm	SABS1123---T10/3, T16/3, T25/3, T40/3			BS4504---T10/3, T16/3, T25/3, T40/3		
	NO OF HOLES	HOLE DIA.	P.C.D	NO OF HOLES	HOLE DIA.	P.C.D
15	4	14	65	4	14	65
20	4	14	75	4	14	75
25	4	14	85	4	14	85
32	4	18	100	4	18	100
40	4	18	110	4	18	110
50	4	18	125	4	18	125
65	4, 4, 8, 8	18	145	4, 4, 8, 8	18	145
80	8	18	160	8	18	160
100	8	18, 18, 22, 22	180, 180, 190, 190	8	18, 18, 22, 22	180, 180, 190, 190
125	8	18, 18, 26, 26	210, 210, 220, 220	8	18, 18, 26, 26	210, 210, 220, 220
150	8	22, 22, 26, 26	240, 240, 250, 250	8	22, 22, 26, 26	240, 240, 250, 250
200	8, 12, 12, 12	22, 22, 26, 26	295, 295, 310, 320	8, 12, 12, 12	22, 22, 26, 30	295, 295, 310, 320
250	12	22, 26, 26, 33	350, 355, 370, 385	12	22, 26, 30, 33	350, 355, 370, 385
300	12, 12, 16, 16	22, 26, 26, 33	400, 410, 430, 450	12, 12, 16, 16	22, 26, 30, 33	400, 410, 430, 450
350	16	22, 26, 33, 33	460, 470, 490, 510	16	22, 26, 33, 36	460, 470, 490, 510
400	16	26, 26, 33, 39	515, 525, 550, 585	16	26, 30, 36, 39	515, 525, 550, 585
450	20	26, 26, 33, 39	565, 585, 600, 610	20	26, 30, 36, 39	565, 585, 600, 610
500	20	26, 33, 33, 39	620, 650, 660, 670	20	26, 33, 36, 42	620, 650, 660, 670
600	20	26, 33, 39 No T 40	725, 770, 770 No T 40	20	30, 36, 39, 48	725, 770, 770, 795

THESE TABLES ARE TO BE USED AS A GUIDE ONLY. DLM DOES NOT ACCEPT ANY RESPONSIBILITY FOR ANY ERRORS OR OMISSIONS!



# BBBEE- LEVEL 3 CONTRIBUTOR

DLM is committed to real empowerment within our own environment as well as our wider community. Our Level 3 BEE status has been achieved through the implementation of our stated policy to pursue and achieve, over a period of time, the following:

- Empowerment shareholding and management.
- A staff composition that closer reflects the broader composition of society.
- The continual growth of our people by developing their potential through training and skills development as well as career path mentoring.
- Procurement practices that assist in reaching empowerment objectives.
- Social upliftment.

## EMPOWERMENT SHAREHOLDING AND MANAGEMENT

- DLM is a 51% Black Owned Company and a wholly owned subsidiary of the Baobab Industrial Group. Over 42% of DLM's Board of Directors is black

## SKILLS DEVELOPMENT

- We have prioritised education and skills development to ensure that previously disadvantaged youth have the opportunity to take part in the economy.
- We are participating in the YES4Youth initiative to give youth an opportunity to gain work experience.

## SOCIO-ECONOMIC DEVELOPMENT

- We are firm believers in the parable that "it is better to teach a man to fish rather than to give him a fish". Sustainable projects aimed at making tools, instruction and training available to those who run income generating projects are constantly sought, evaluated and supported if they meet our criteria.
- We support the Good Citizenry NPO in their project to promote women and youth to engage in conservation of bees and honey production.







### Johannesburg (Head Office)

1 Angus Crescent  
Longmeadow Business Estate East  
Modderfontein  
1609

PO Box 758, Isando, 1600  
Tel: +27 11 457 0500

### Cape Town

Unit 1 Link Park  
Cnr Link Road and Montague Drive  
Montague Gardens

PO Box 32, Ottery, 7808  
Tel: +27 21 551 0727

### Durban

Unit 4 Greenview Park  
30 Nipper Road  
New Germany

PO Box 2546, Pinetown 3600  
Tel: +27 31 705 1966

### East London

PO Box 32, Ottery, 7808  
Tel: +27 21 551 0727

### Rustenburg

2 Delta Street  
Mabe Park  
Waterfall East  
Rustenburg

PO Box 3375, Rustenburg  
Tel: +27 14 596 7086

### Welkom

4A 13th Street  
Voorspoed East  
Welkom

PO Box 2317, Welkom, 9460  
Tel: +27 57 355 3081